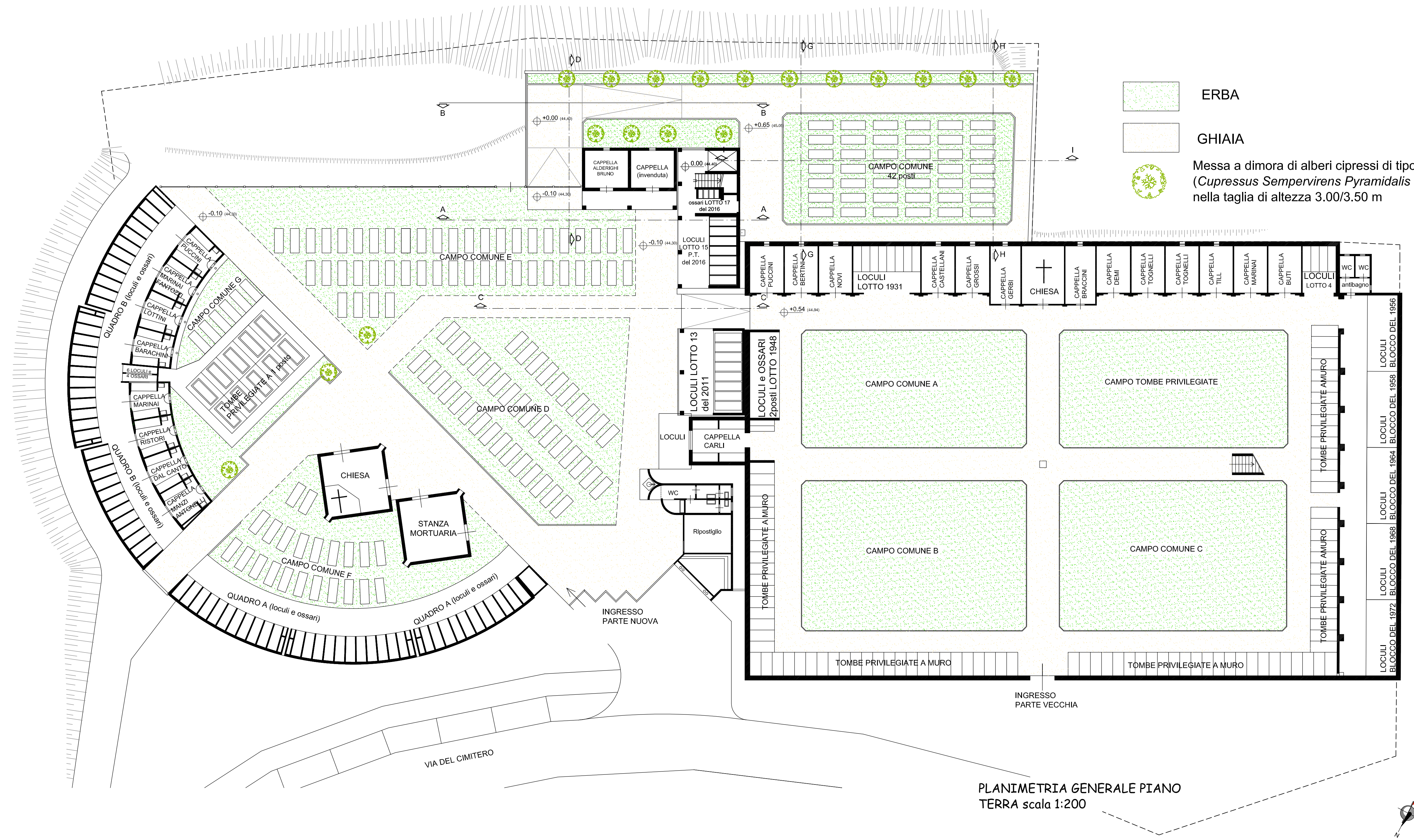
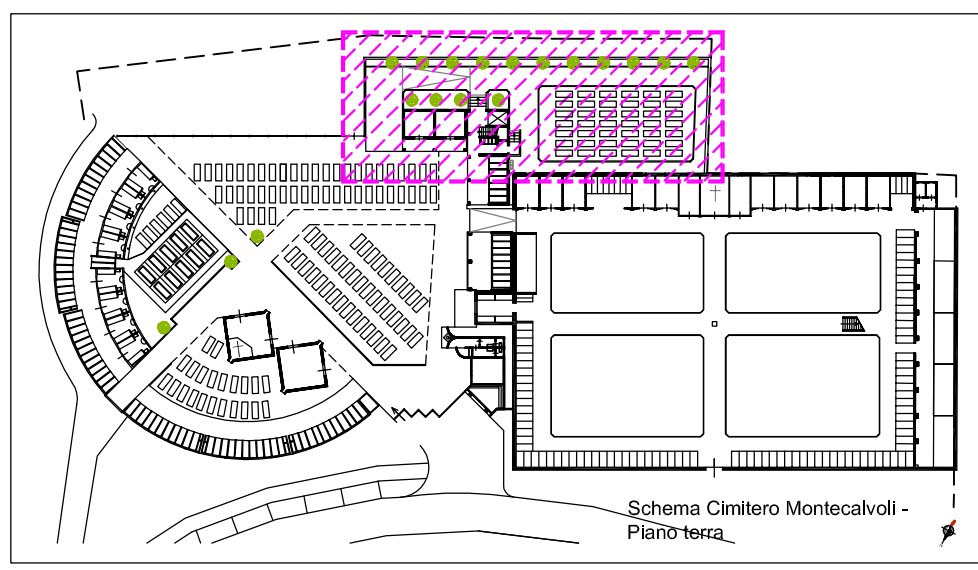


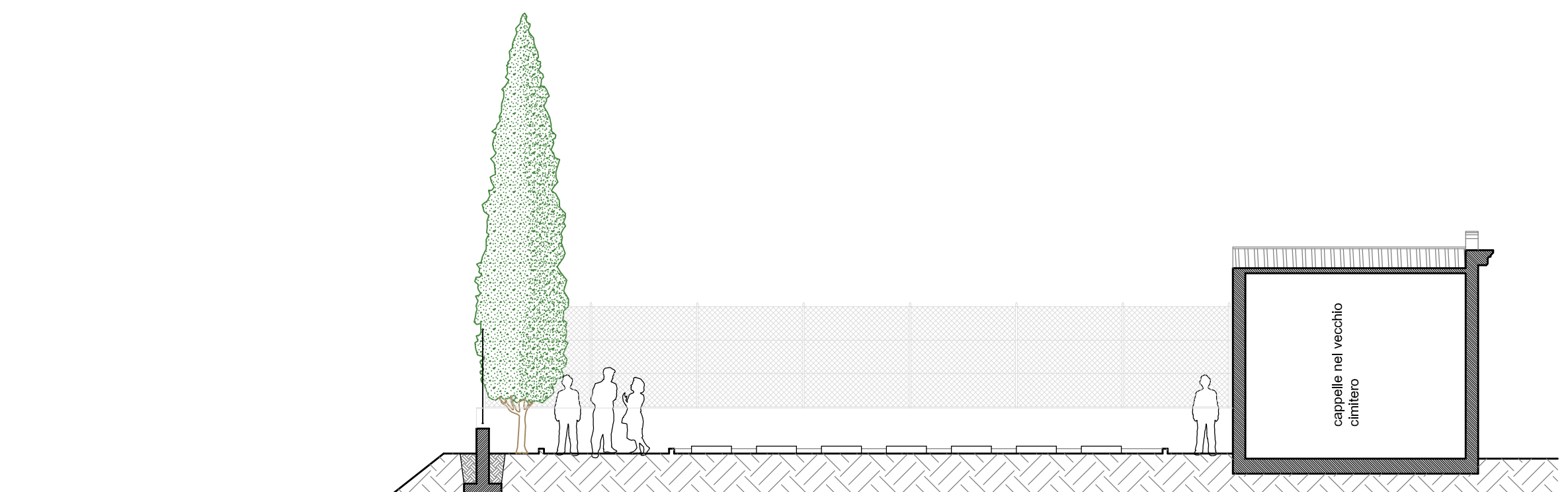


TAVOLA n° **A18**
STATO MODIFICATO
art. 33, comma 1, punto c) del DPR 207/2010
02/09/2020

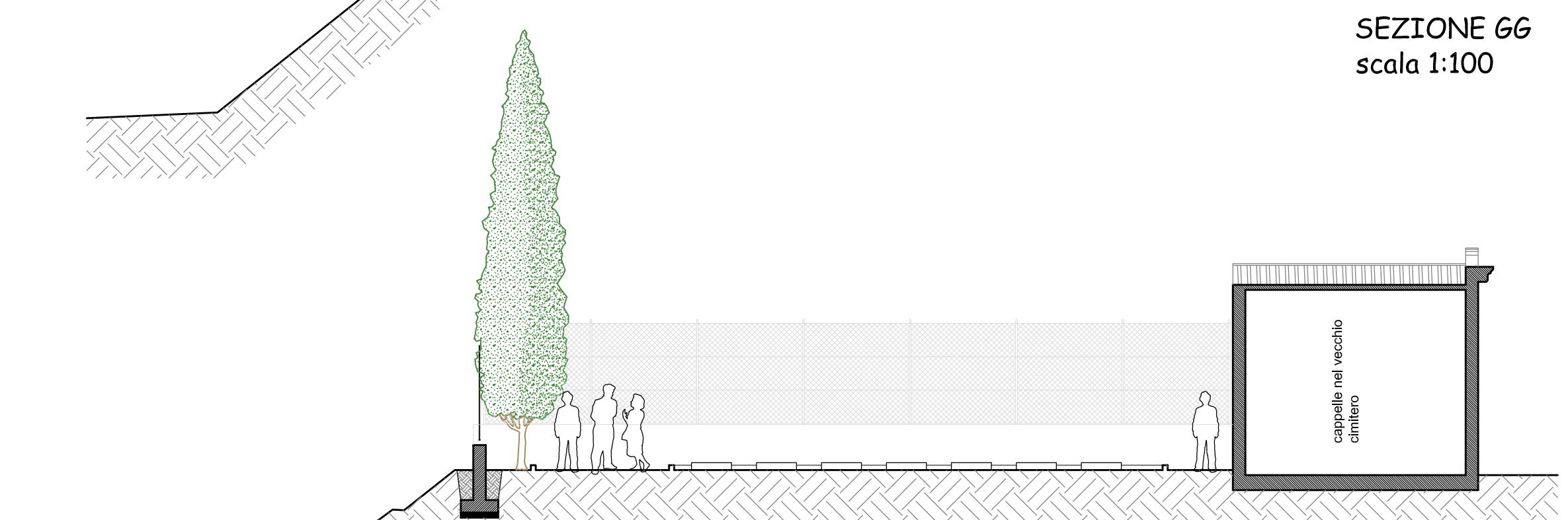
RESPONSABILE DEL PROCEDIMENTO: **Dott. Ing. Maurizio Iannotta**
Sevizio LL.PP. Comune di Santa Maria a Monte
PROGETTISTA E DIRETTORE LAVORI: **Architetto Fabiano Bertelli**
GEOLOGO: **Dott. Geol. Gian Paolo**
COORDINATORE ALLA SICUREZZA: **Architetto Fabiano Bertelli**



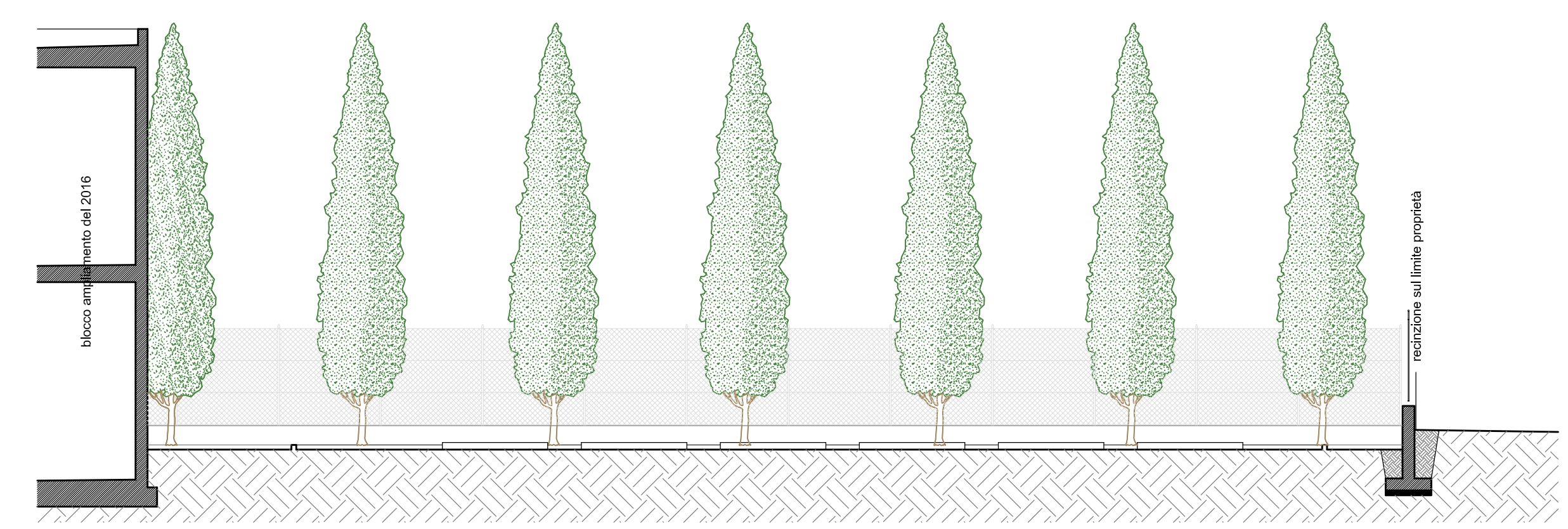
PLANIMETRIA GENERALE PIANO TERRA
scala 1:200



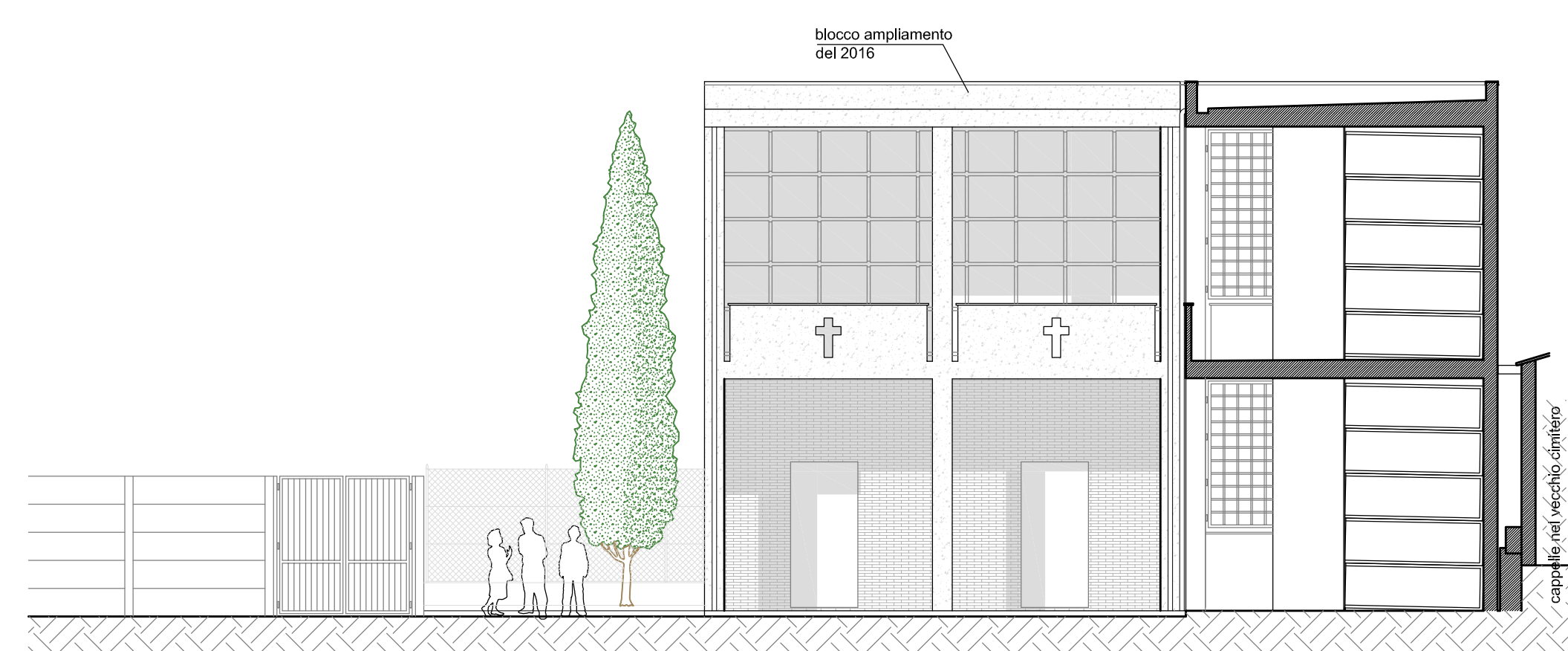
SEZIONE GG
scala 1:100



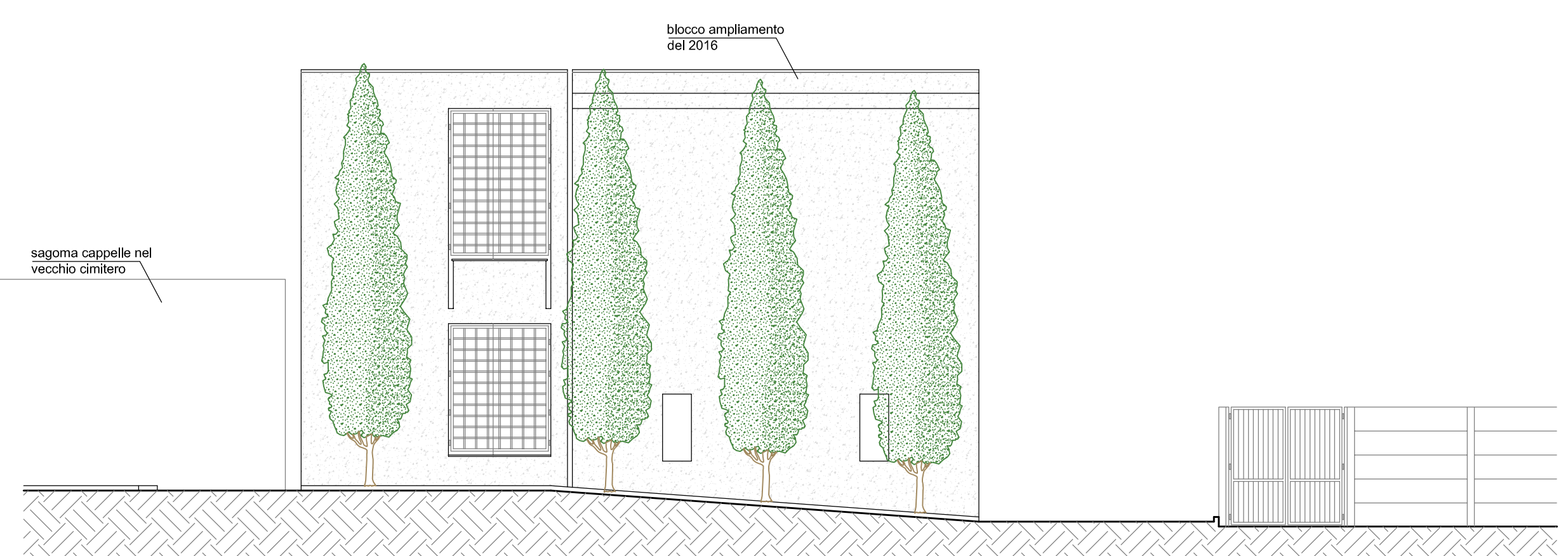
SEZIONE HH
scala 1:100



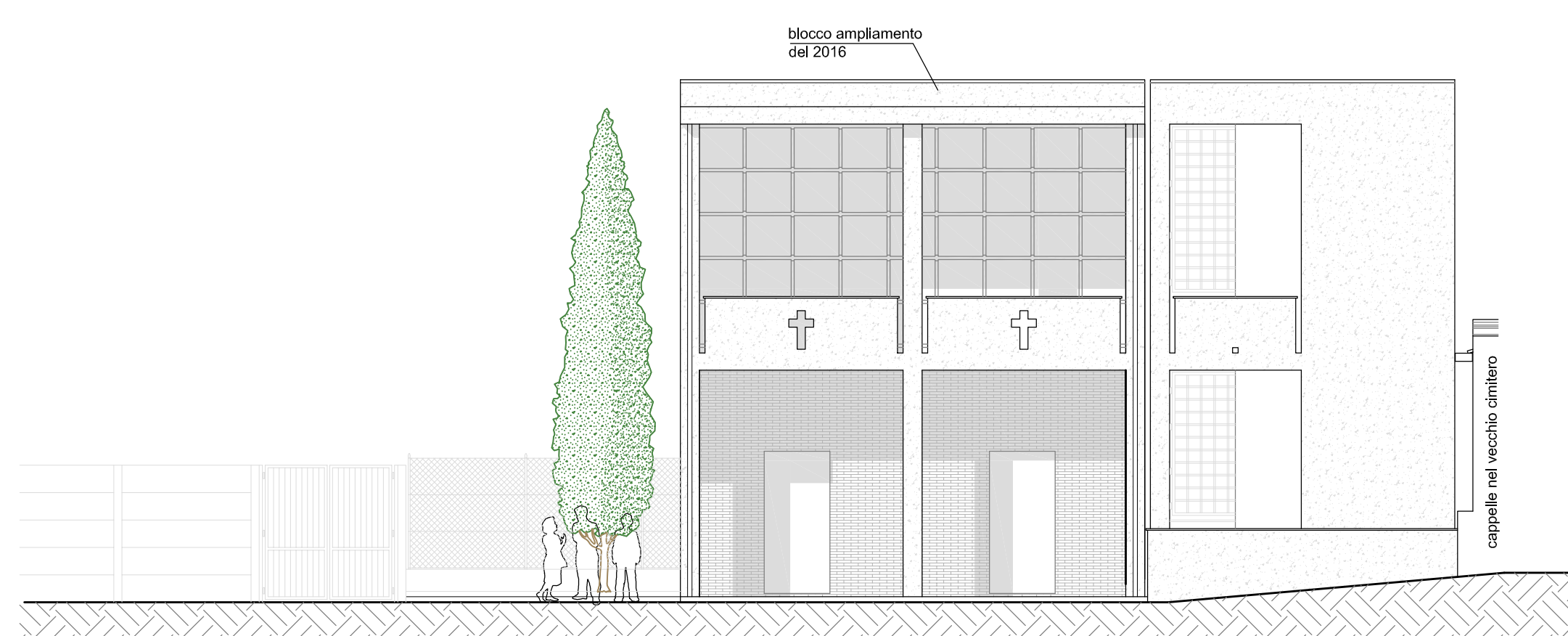
SEZIONE II
scala 1:100



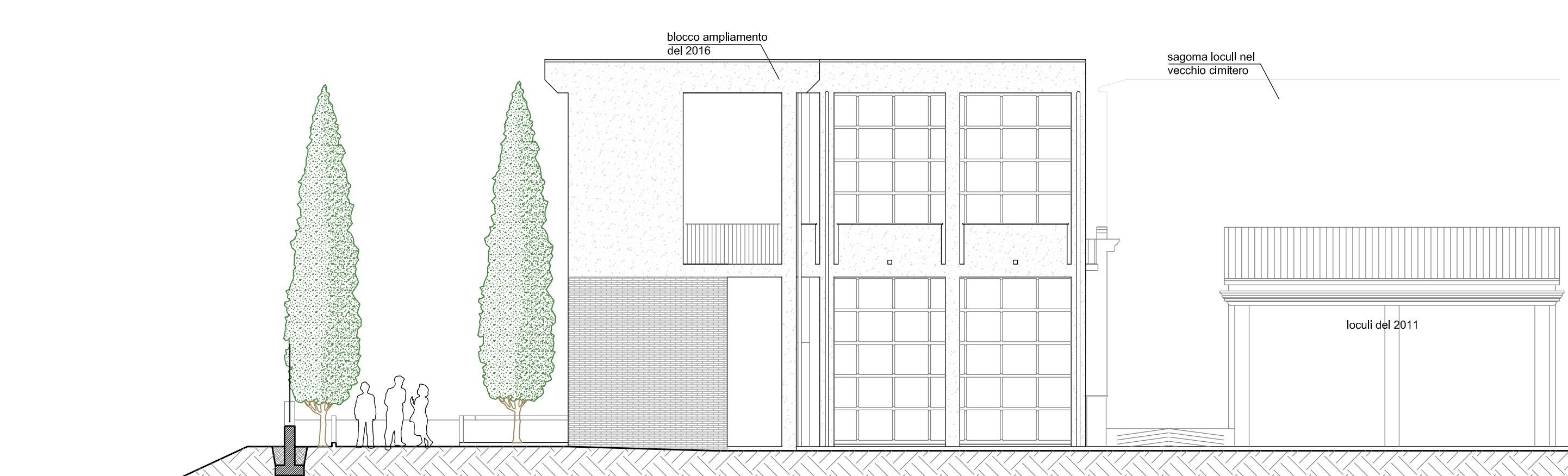
SEZIONE AA
scala 1:100



SEZIONE BB
scala 1:100



SEZIONE CC
scala 1:100



SEZIONE DD
scala 1:100